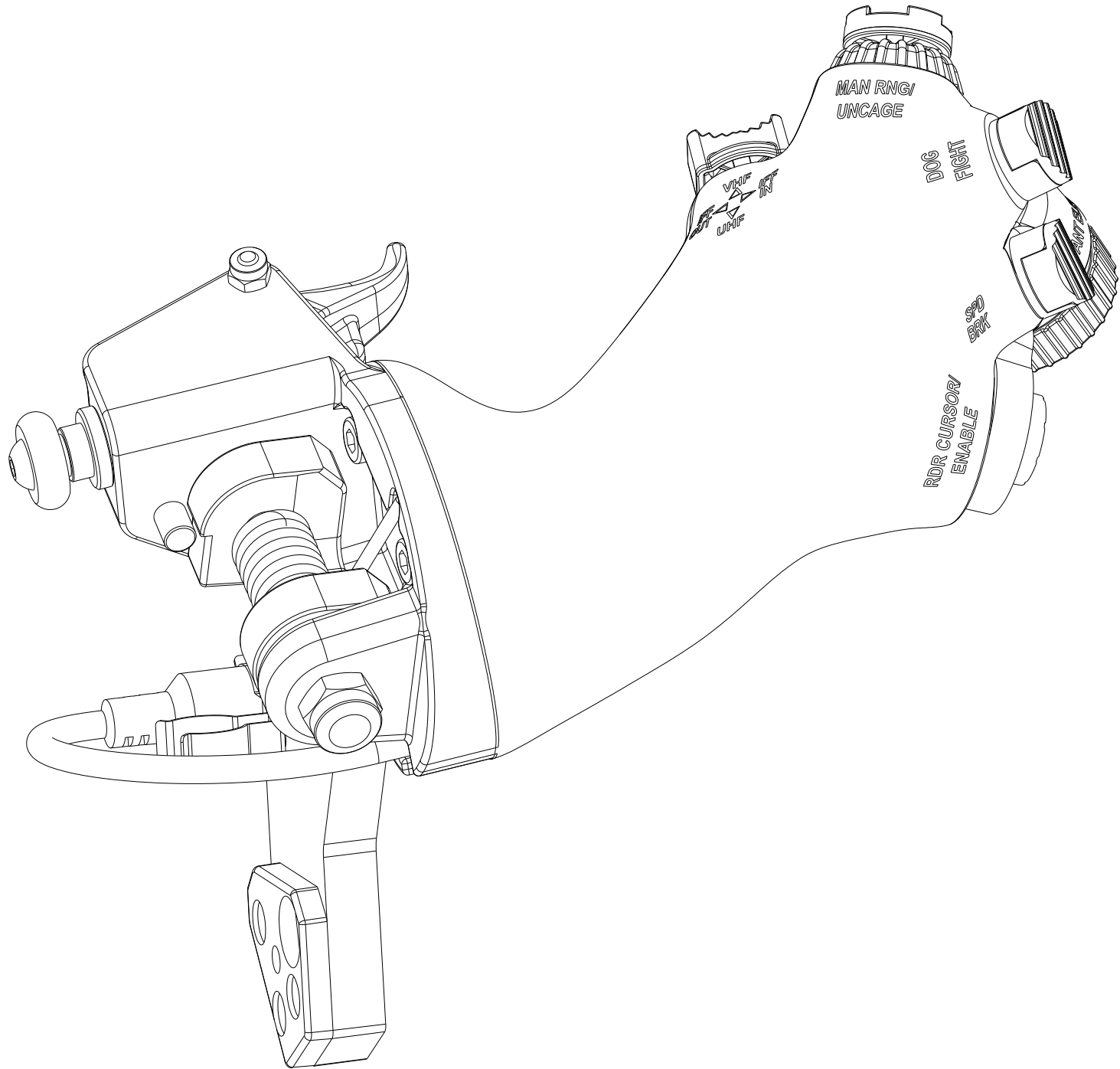


THROTTLE HANDLE OF F-16 H.O.T.A.S

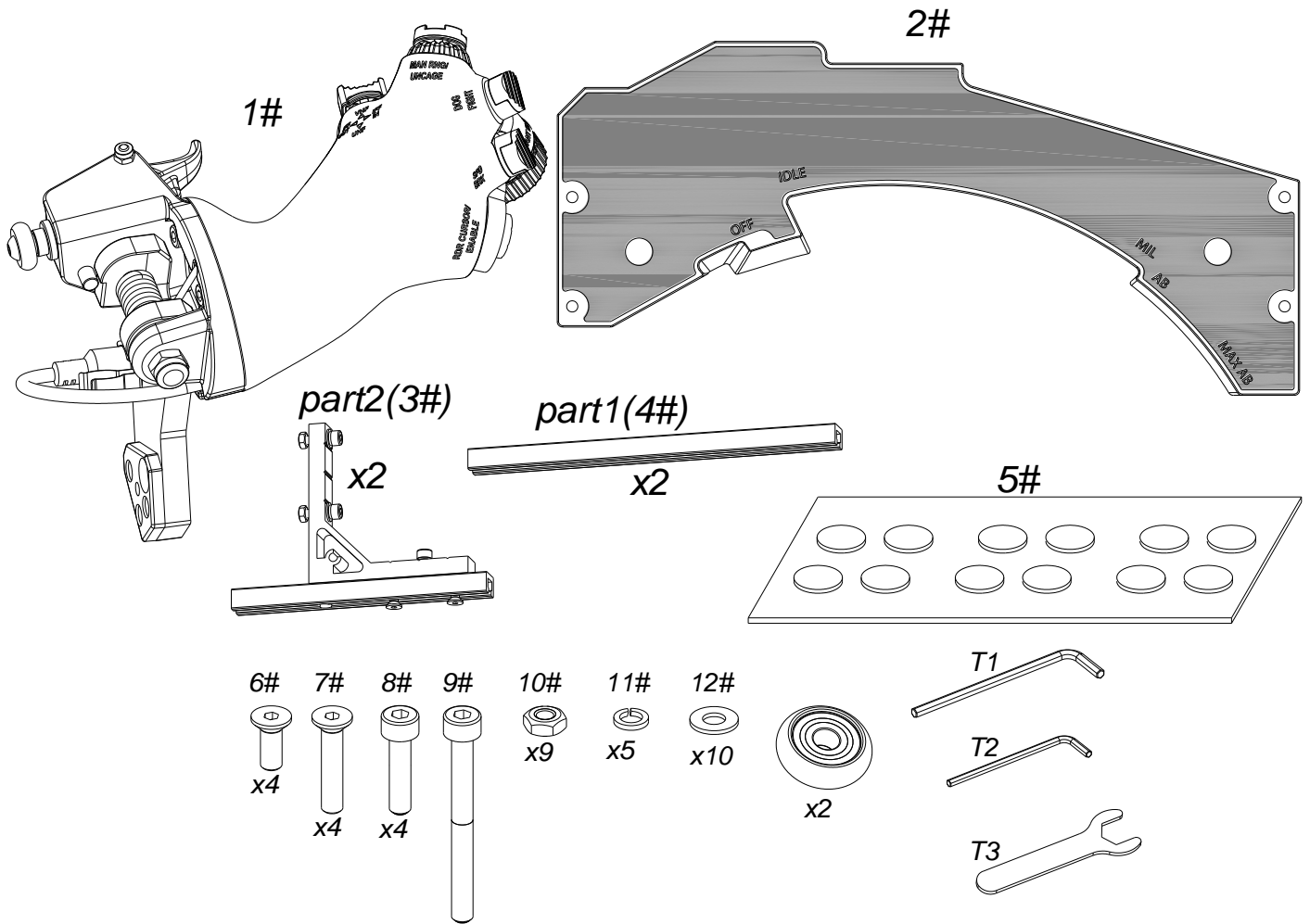
User Manual V1.0 2022.01



Content :

Content inside	1
1 Parameter.....	2
1.1 Performance	2
1.2 Compatibility.....	2
1.3 Size	3
2 Function.....	3
2.1 Button/Functions.....	3
2.2 Adjustment.....	4
3 Assembly.....	4
Change of bearing	4
4 Connection of the parts.....	4
5 Base connection.....	5
5.1 Throttle grip connection with T2 base.....	5
5.2 Slide Rail connection with T2 base and adjustment	8
5.3 Additional assembly method	13
6 Calibration.....	14
6.1 Mini-joystick calibration	14
6.2 Z axis calibration	15

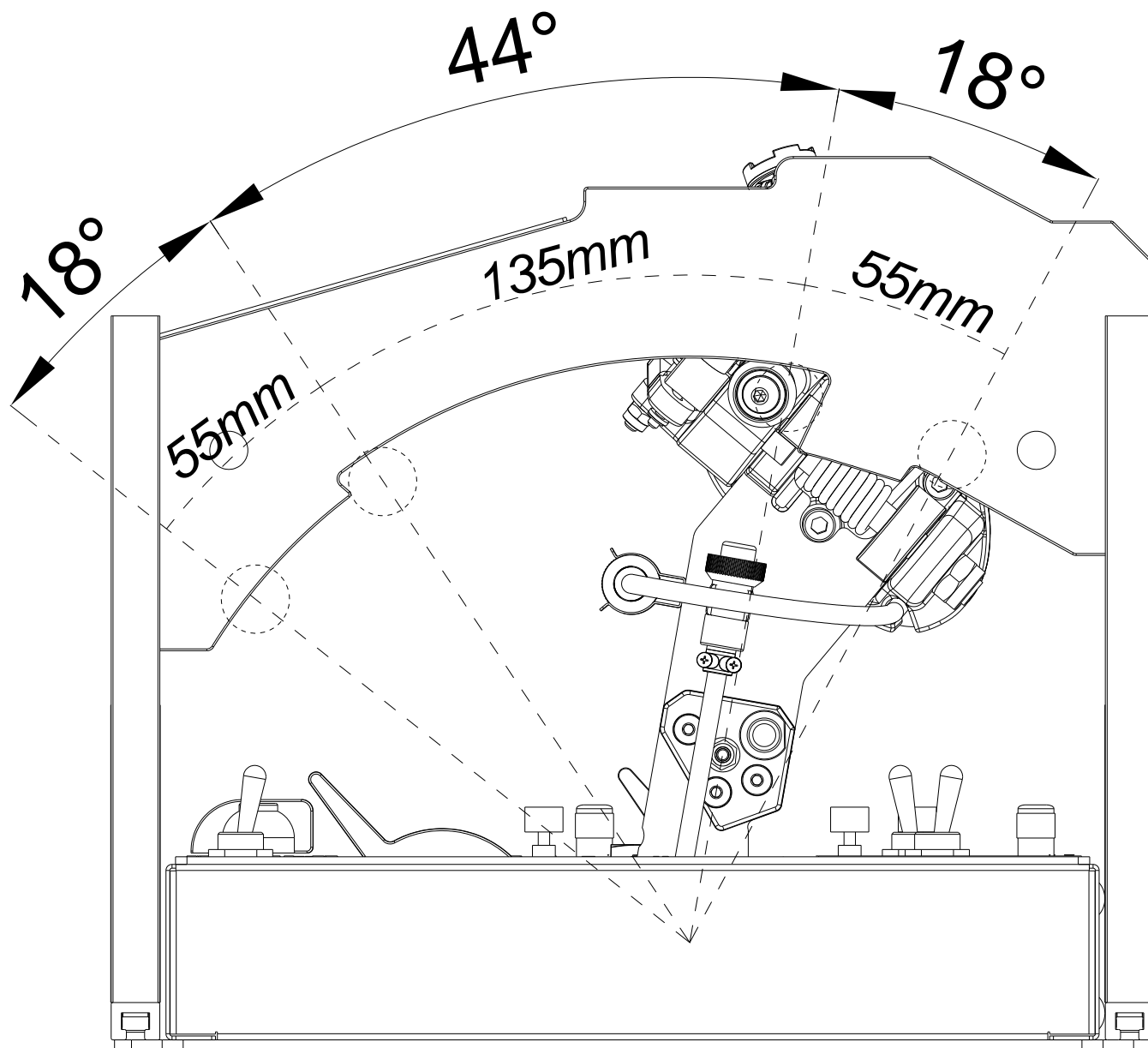
Content inside



① F-16 Throttle (1#)	1
② Slide rail (2#)	1
③ Rail assembly (3#、4#)	1
④ accessory box	1
⑤ Tool bag	1
⑥ stick pad (5#)	1

1 Parameter

1.1 Performance



Total movement angle 80 (Idle to stop 18, normal thrust 44, afterburner 18)

1.2 Compatibility

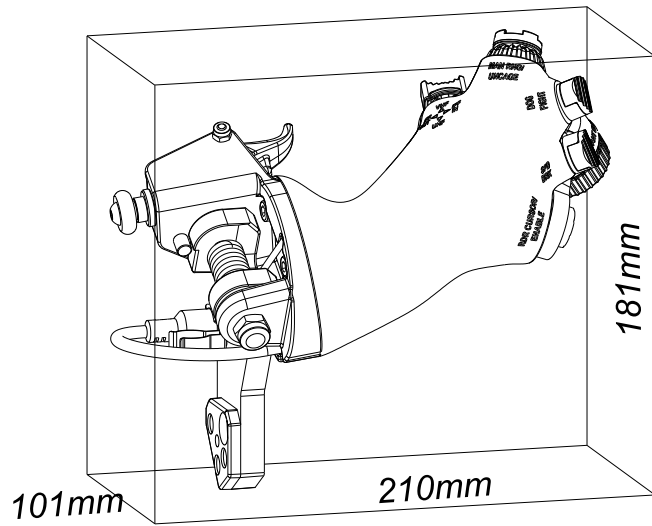
Attached to T2 (Orion) base.

1.3 Size

Long width and high

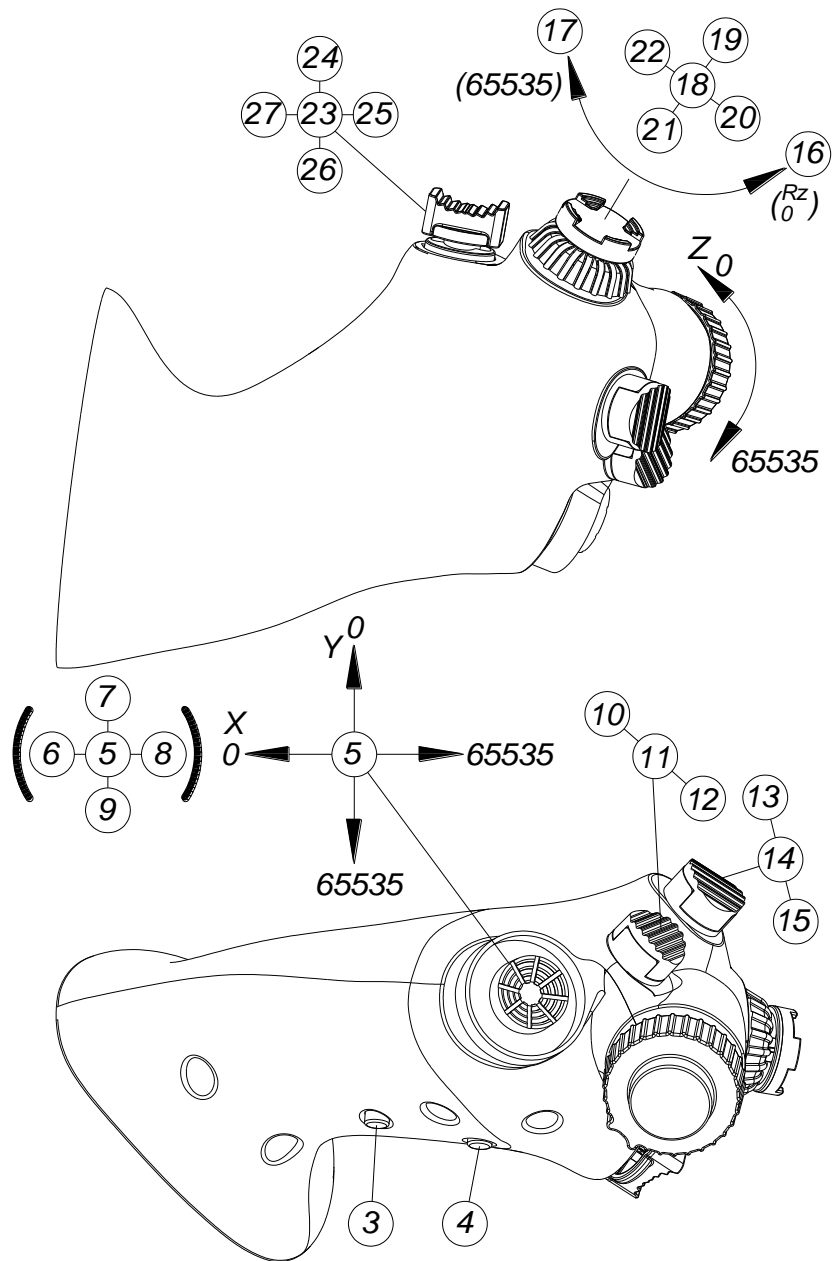
210mm*101mm*181mm ;

MASS=0.8Kg=1.77lb。



2 Function

2.1 Button/Functions

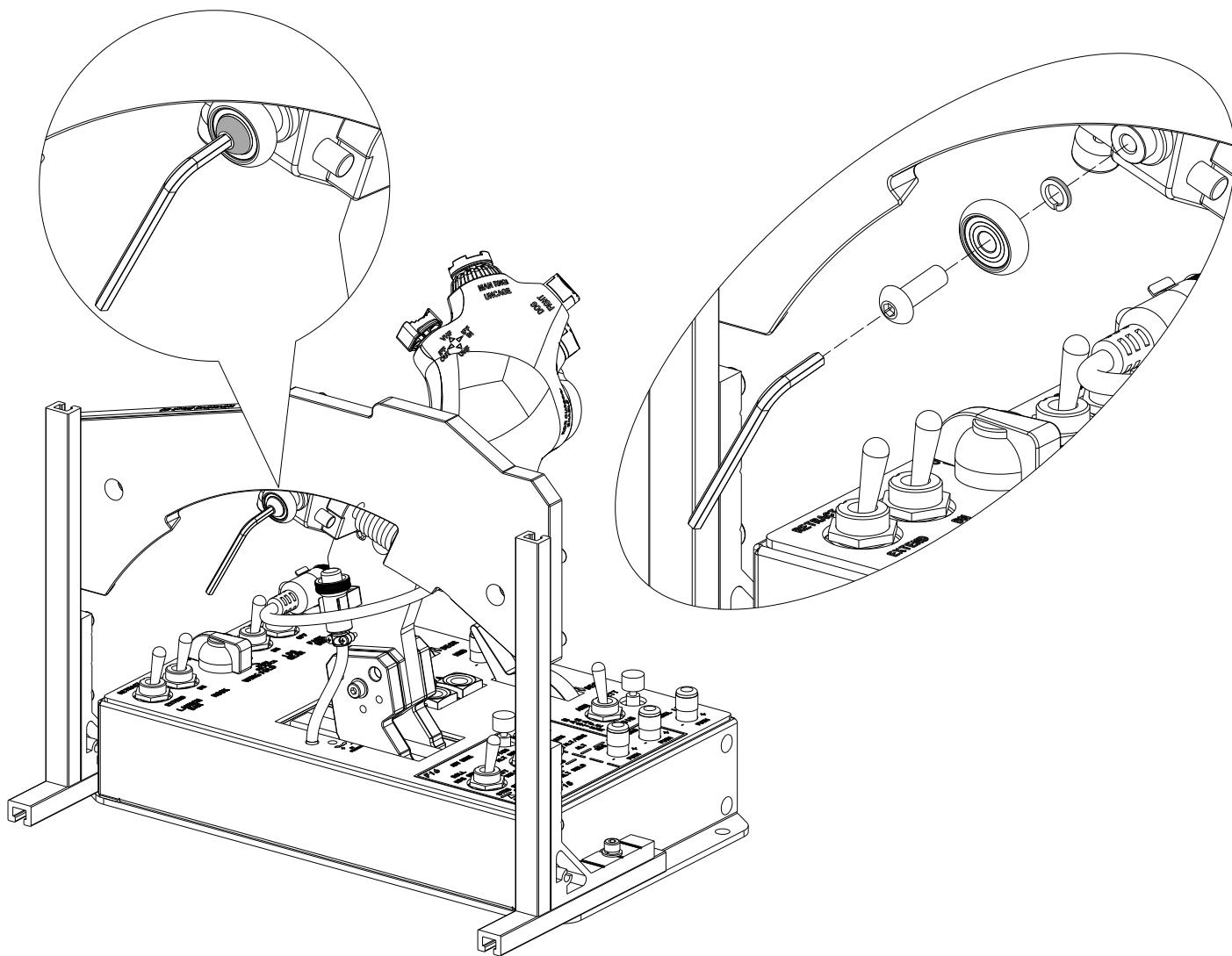


2.2 Adjustment

/

3 Parts assembly

Bearing exchange

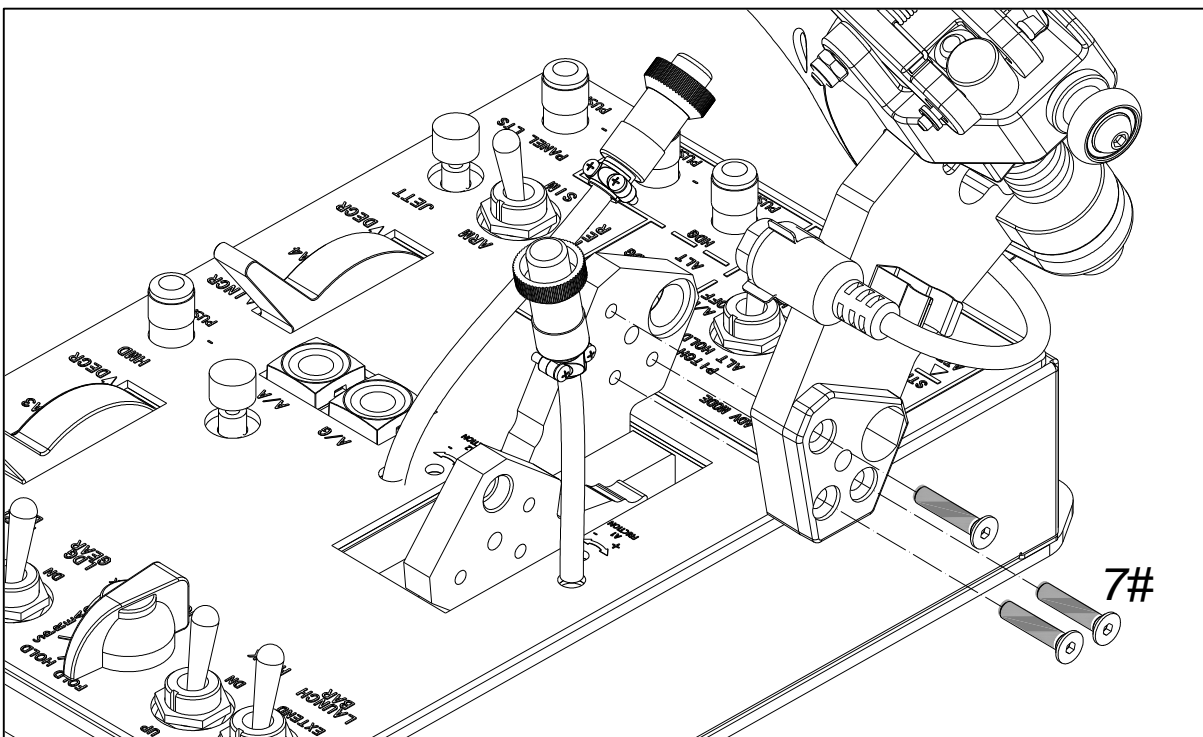
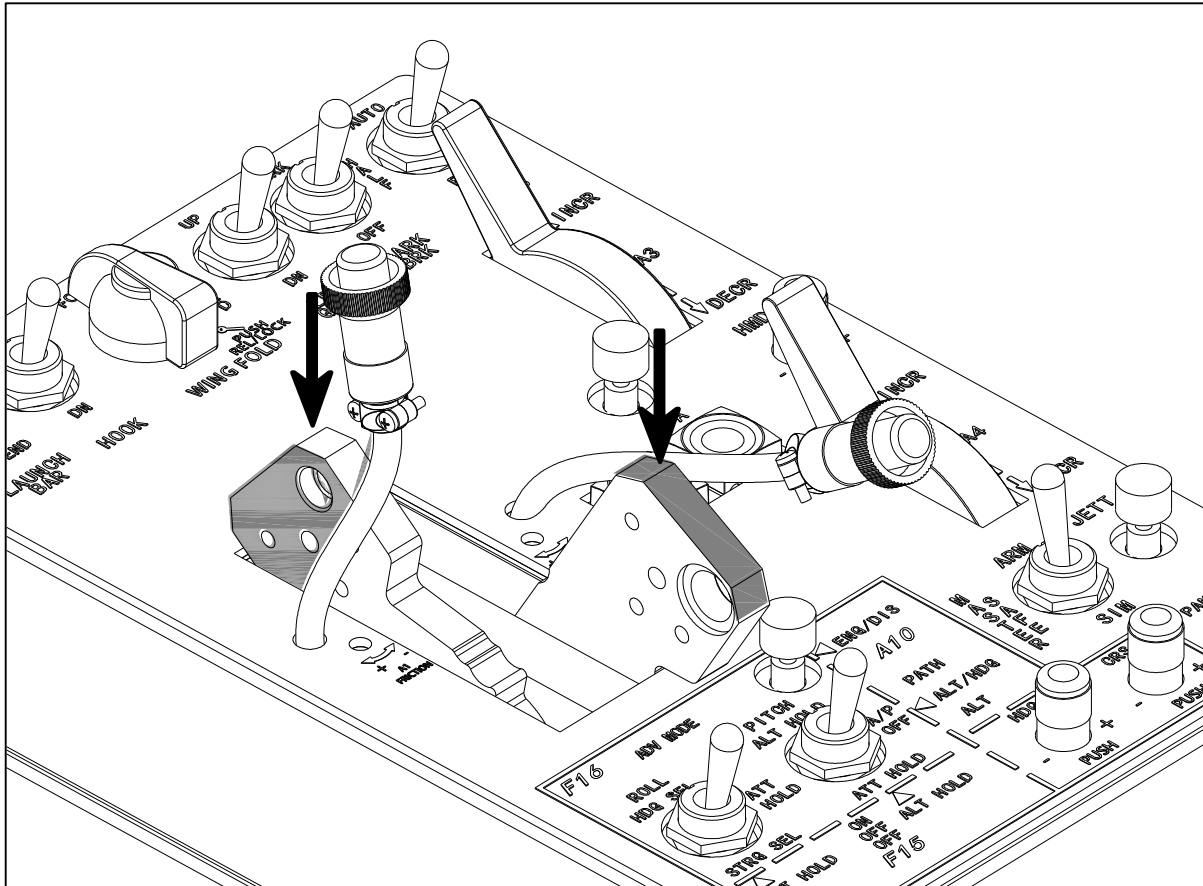


4 Parts connection

/

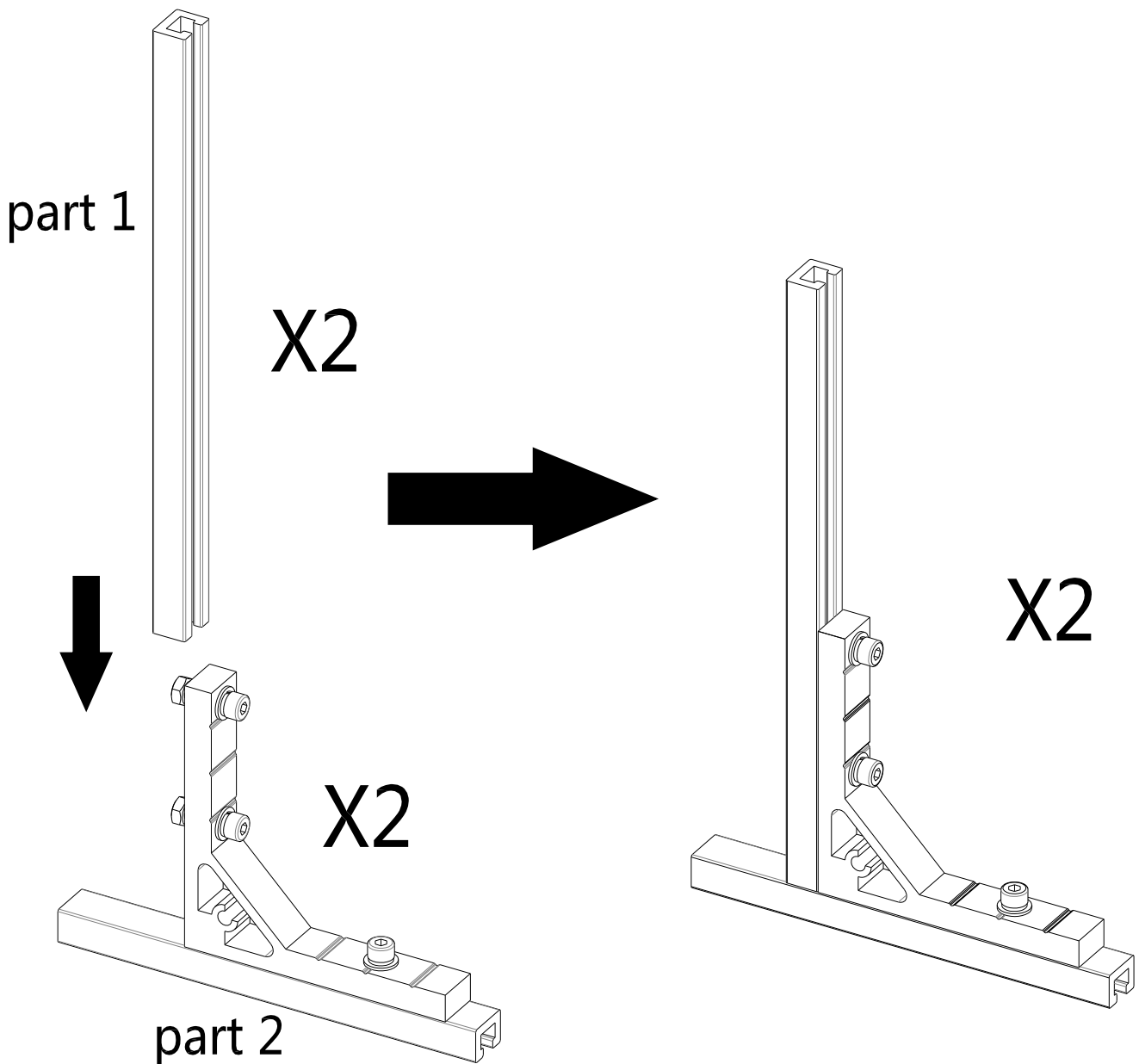
5 Connection with base

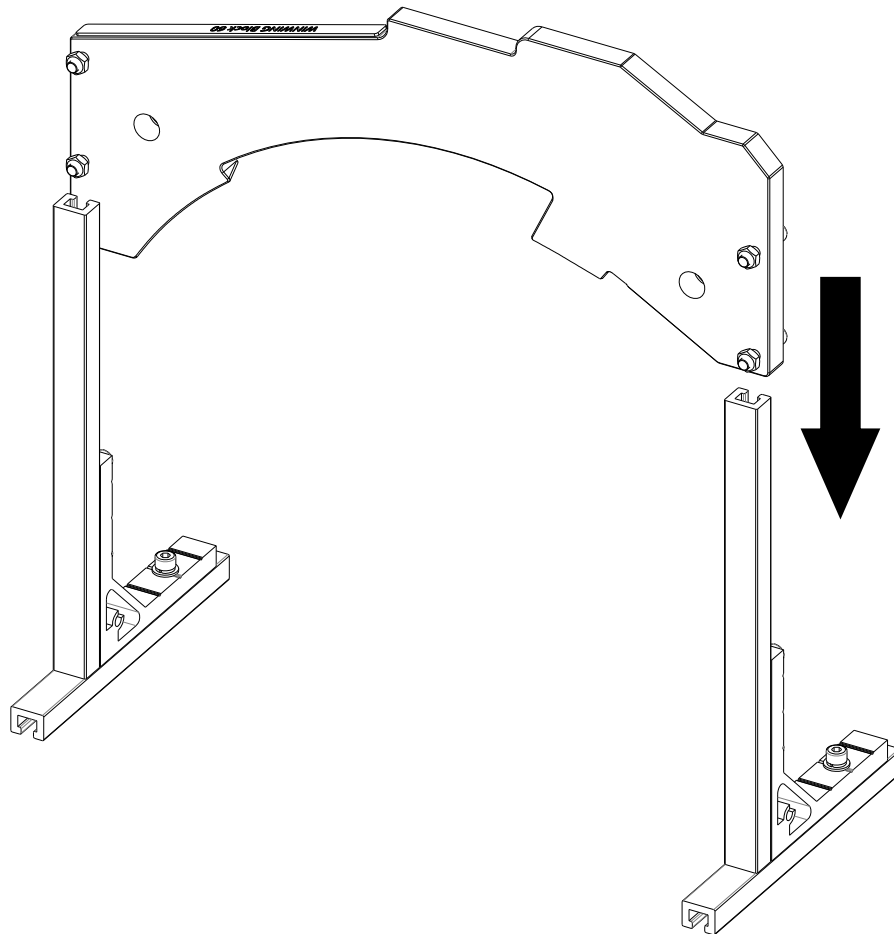
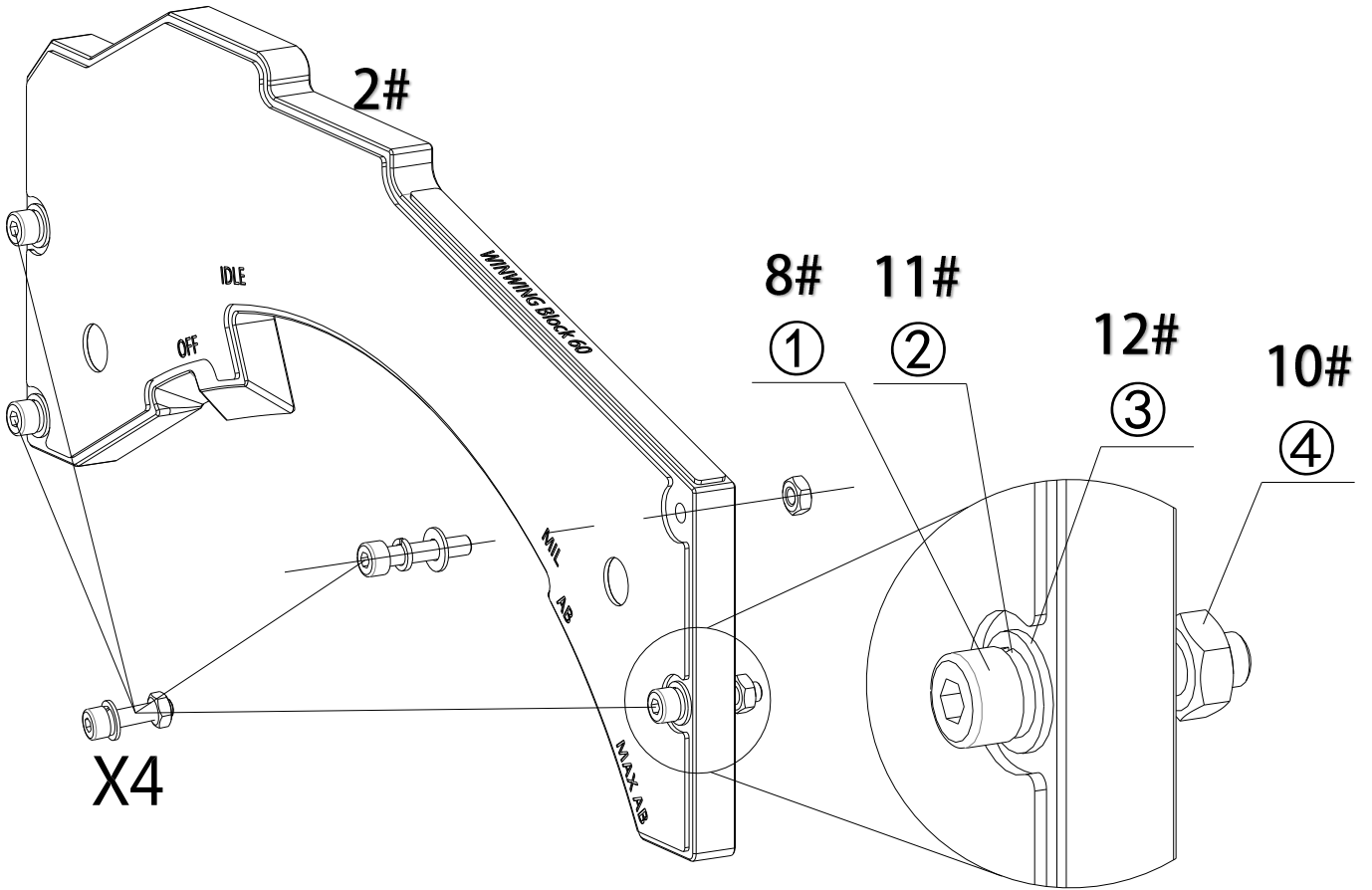
5.1 Throttle grip connection with T2 base

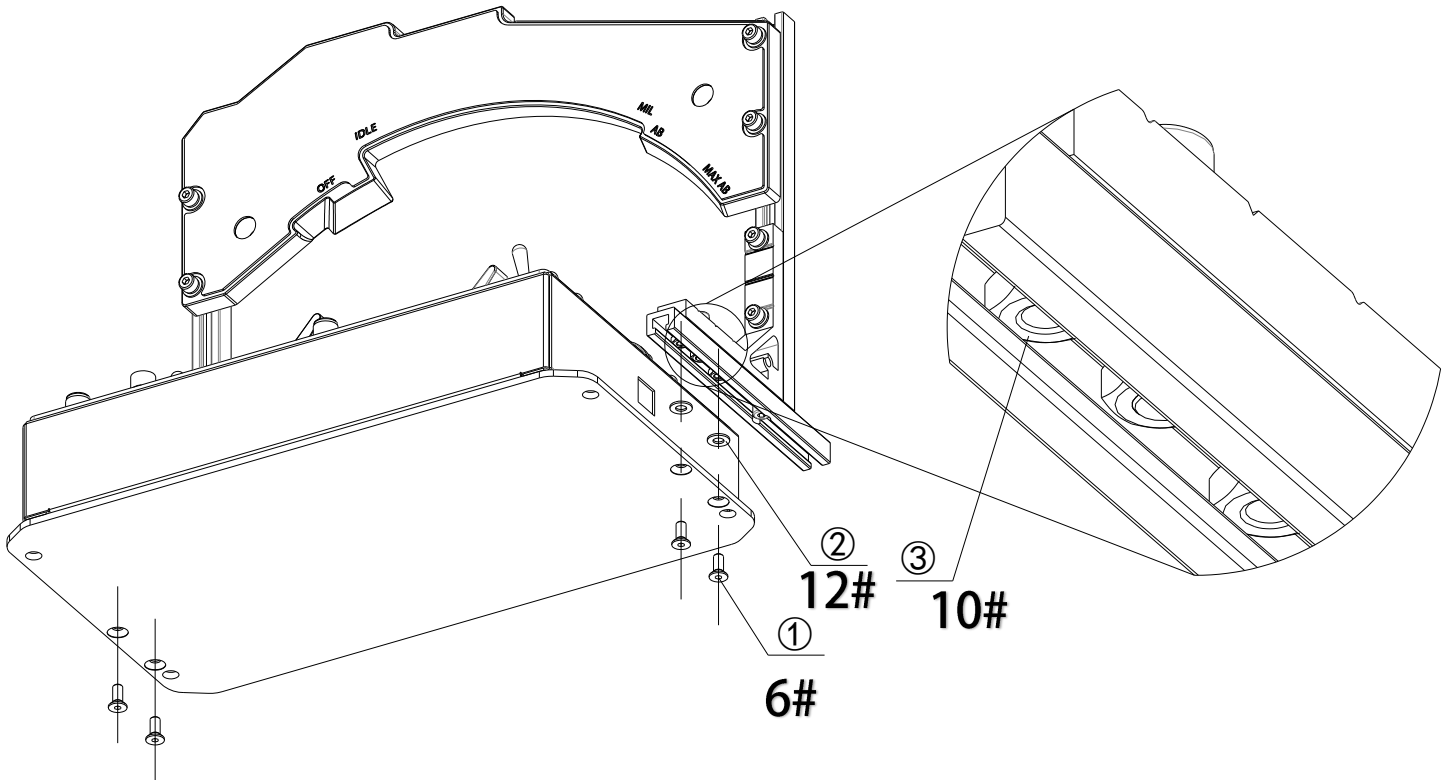
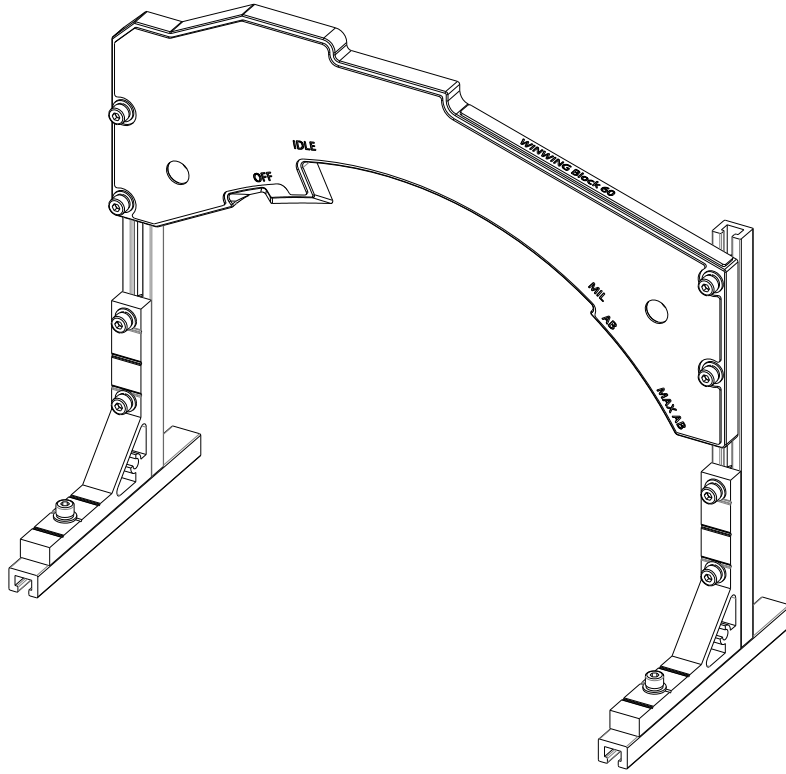


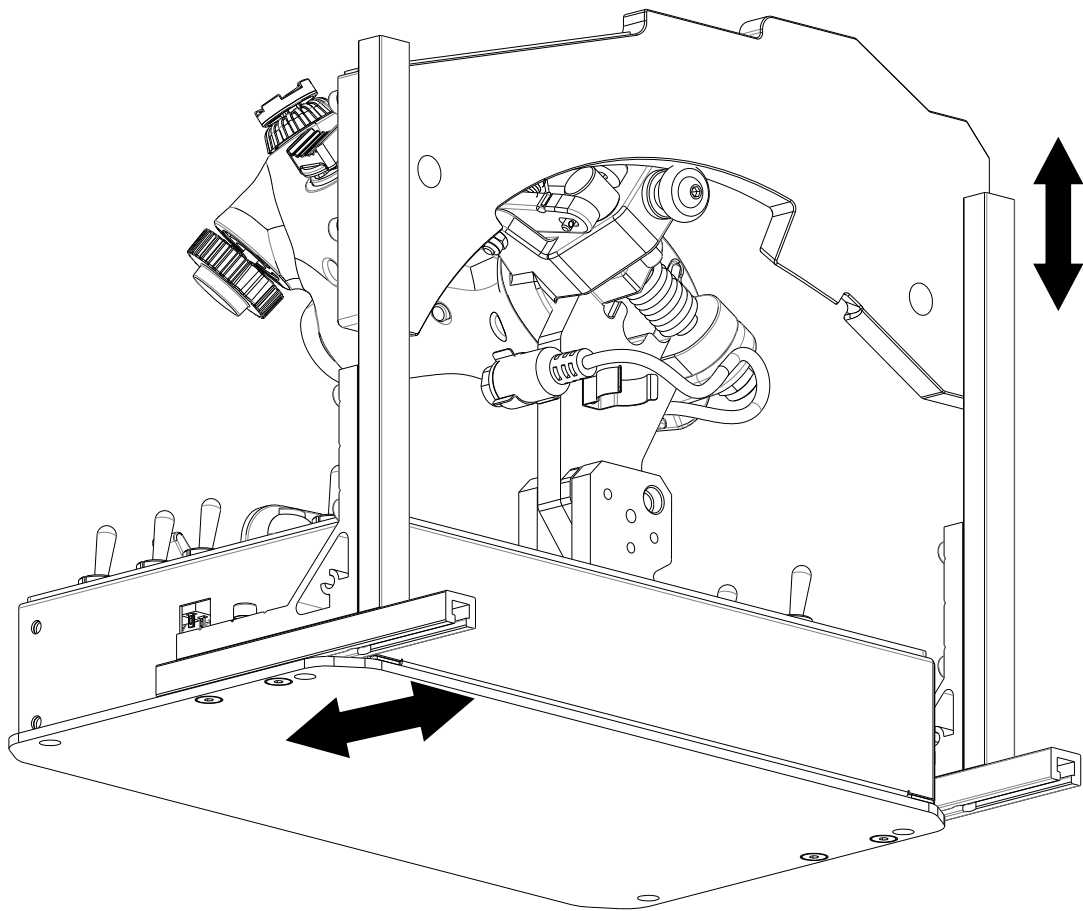
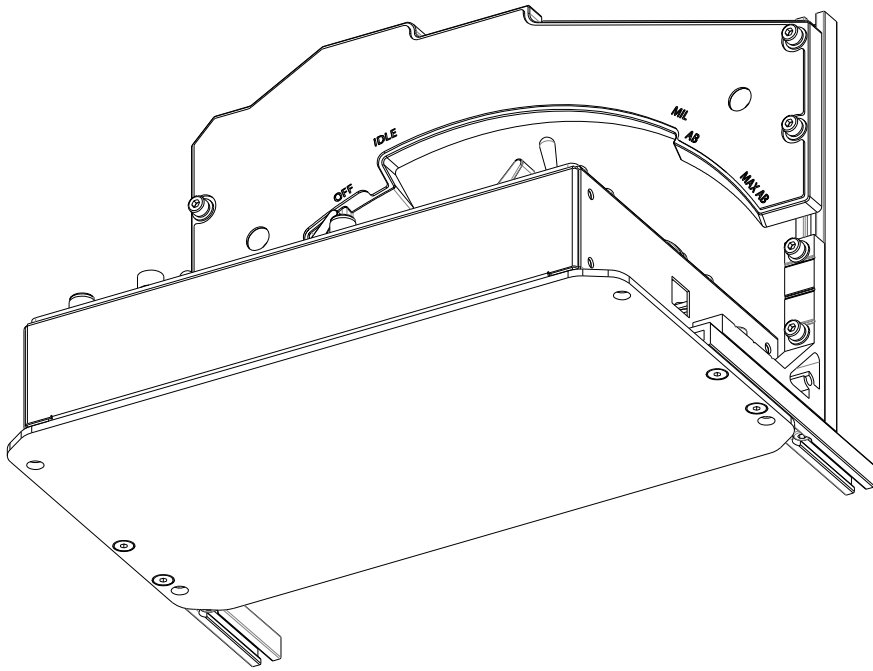
- ① Split the throttle, Left handle to full AB, right handle to cutoff;
- ② Use 3 screw to pin the throttle grip to RIGHT SIDE of the handle;
- ③ Align the left and right handle, pin them together;
- ④ Split the throttle, Left handle and right handle to cutoff, Pull the connection wire from right side of T2, connect the wire into grip;
- ⑤ Split the throttle, Left handle and right handle to cutoff, Put the wire on the left side into clip.

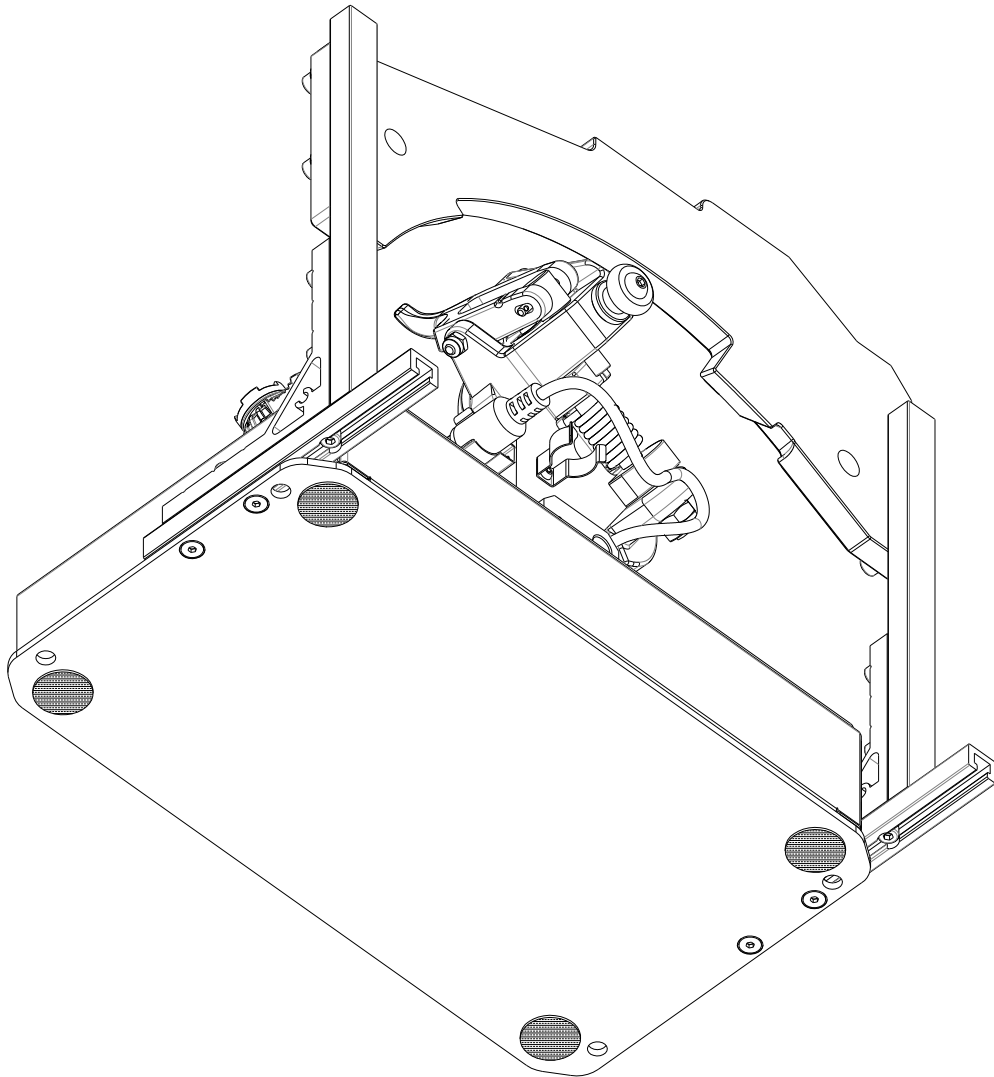
5.2 Slide Rail connection with T2 base and adjustment







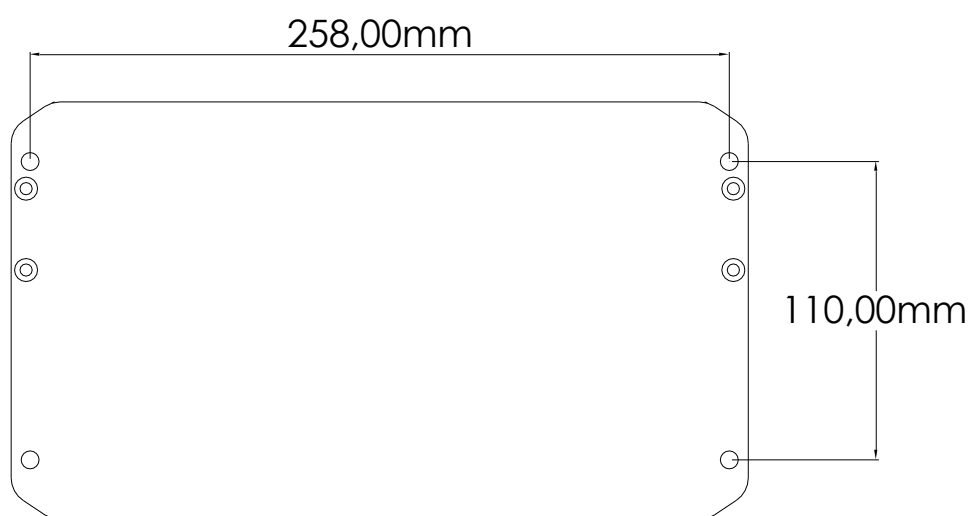
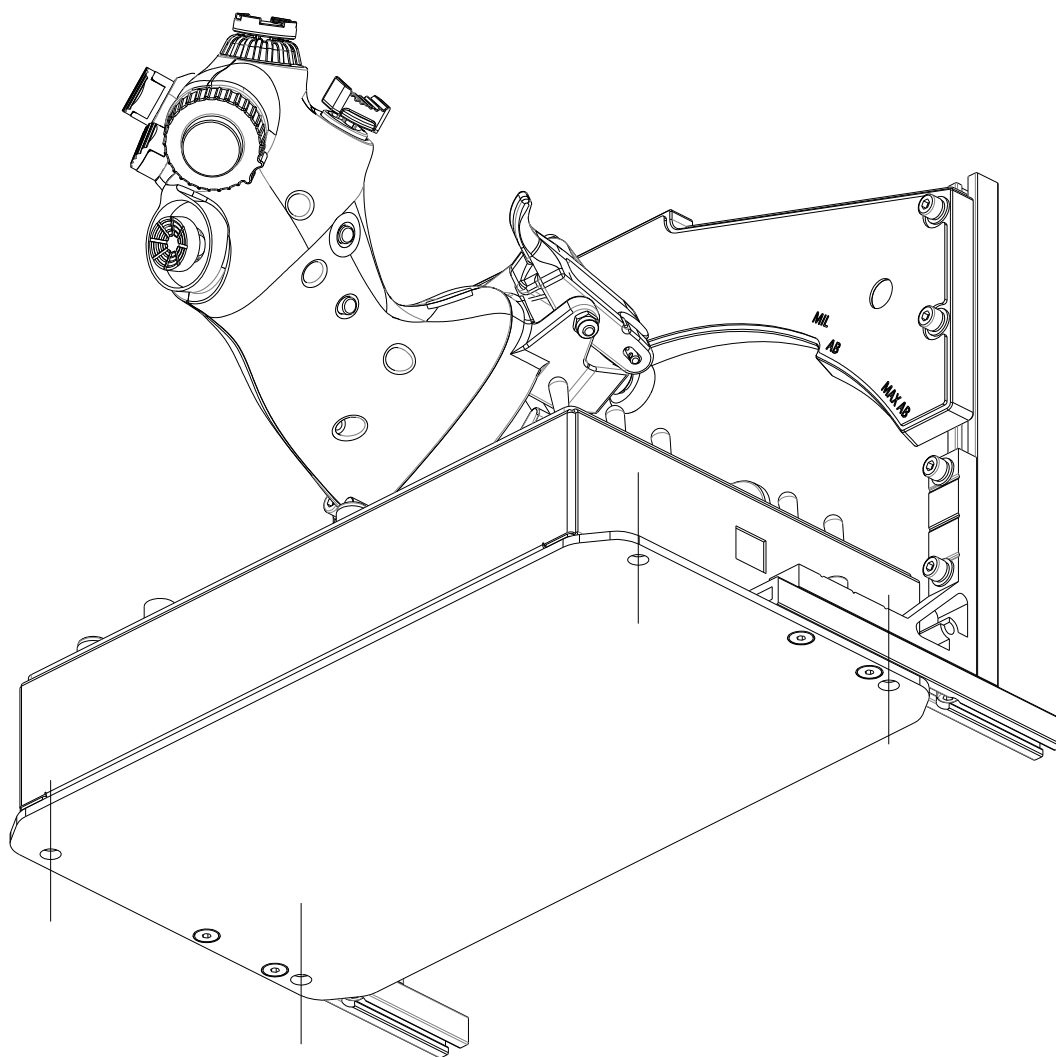




- ① Slide part 1 into part 2 to the bottom position. Using 3mm allen wrench to tighten it up;
- ② Following the directions from the picture;
- ③ Slide the 4 M4 nut into position as picture shown. DO NOT TIGHTEN UP YET. (you will need adjustment);
- ④ Attached the slide rail into the T2 base. Slide the rail into the position, insert the screw, DO NOT TIGHTEN UP YET;
- ⑤ Adjust the slide rail position against the roller on the throttle grip, then tighten up all screws;
- ⑥ Attached the stick pad on the bottom of the throttle base.

5.3 Additional assembly method

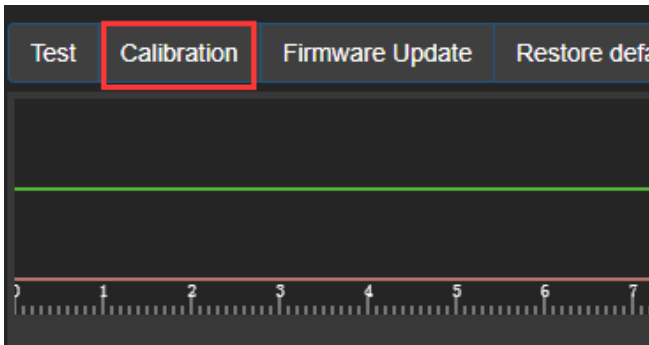
Use the 4 screw hole on T2 base; please review T2-ORION THROTTLE BASE-MANUAL Ch 5.



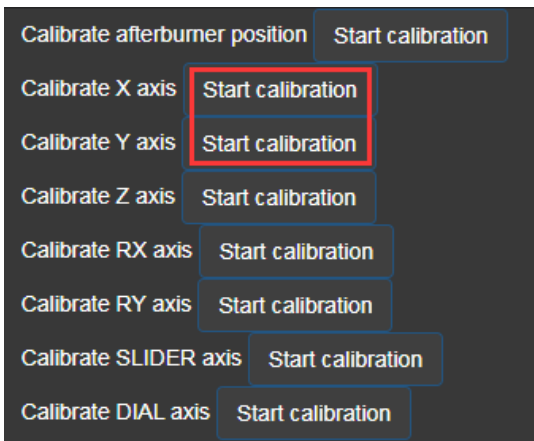
6 Calibration

6.1 Mini-joystick calibration

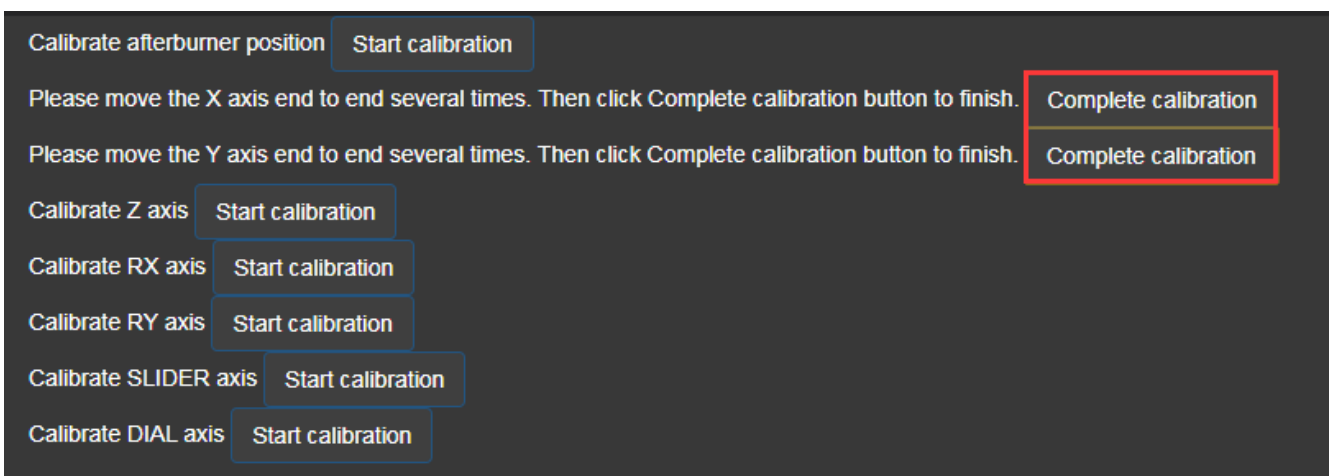
- ① Start sim App pro. Enter the Test page. Click calibration;



- ② In the calibration page, click the options in red square, move the mini-joystick full range;



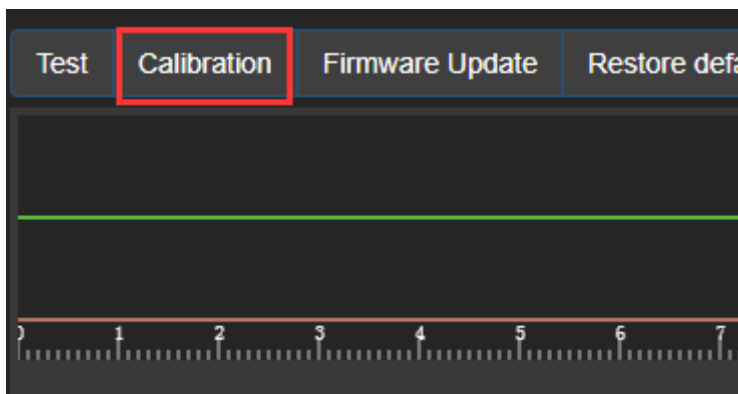
- ③ After the full range movement. Click the options as shown;



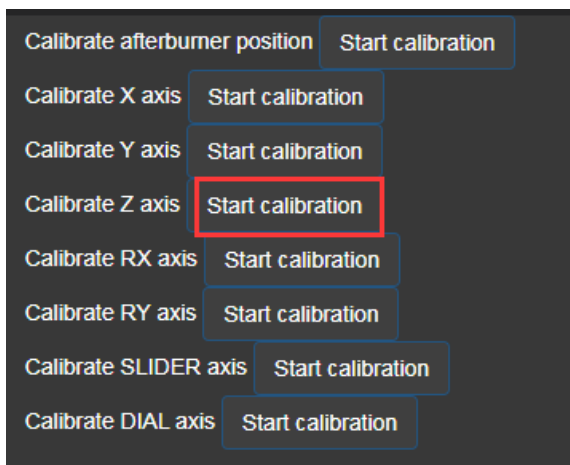
- ④ You have completed the calibration. return to the test page to observe the correct response.

6.2 Z Axis Calibration

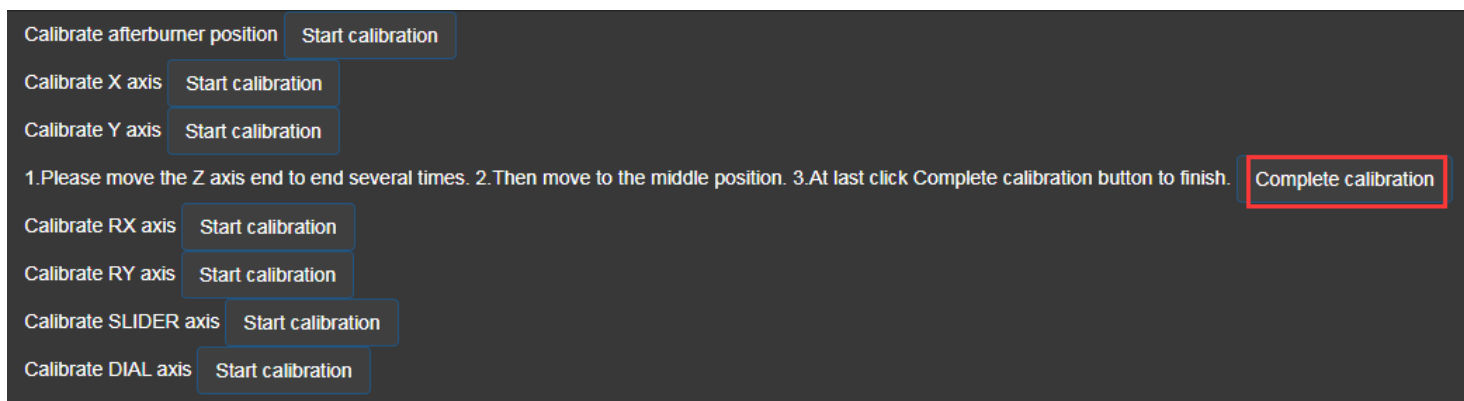
- ① Start sim App pro. Enter the Test page. Click calibration;



- ② At the test page. Click the following button for calibration. Move Z axis full range for calibration;



- ③ After the full range movement. Move Z axis to the middle position, Click the following options;



- ④ Return to the Test page, check if the calibration is correct.

* This is the final version of the manual,all update will be made online.

成都翼胜科技有限责任公司

WWW.WINWING.CN

INFO@WINWING.CN

High-tech International Enterprise Zone No.19 Building,Changshengqiao Road

1111#, Pidu District, Chengdu,China 610000